

**SET  
PLAN**  
Conference  
2015

Research, innovation  
and competitiveness  
for the Energy Union

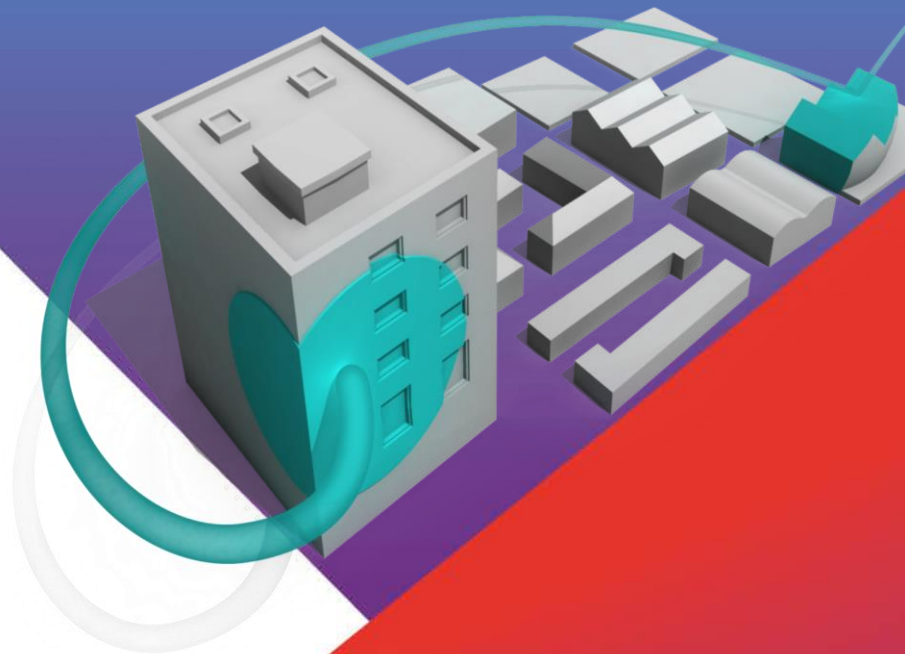
**DEEP RENOVATION PROJECT**

Jasper van den Munckhof  
Manager EnergieSprong

---

**SESSION 5**

Efficient energy systems  
Tuesday 22 September 2015





A photograph of an industrial port scene at dusk or dawn. In the foreground, a large black container ship with "CMA CGM CORAL" written on its side is docked. A white tugboat is positioned in front of it. The background features a large industrial facility with several tall smokestacks emitting thick white smoke. A large gantry crane is visible on the left side of the frame. The sky is a mix of orange and grey.

€ 13 billion

+/- € 260 billion







## QUALITY

*Long-year warranty energy performance house*



## NON-INTRUSIVE

*Refurbishment within one week*



## AFFORDABLE

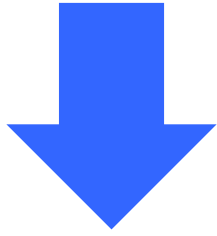
*Financeable from energy cost savings*



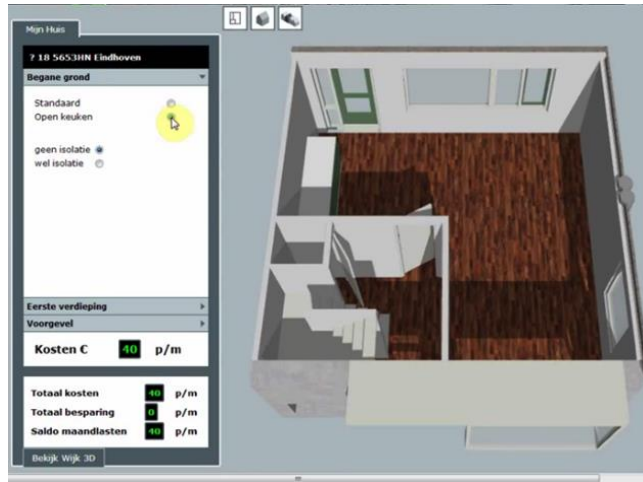
## IMPROVE LOOK & FEEL

*Make the neighbours jealous*

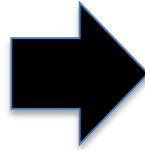
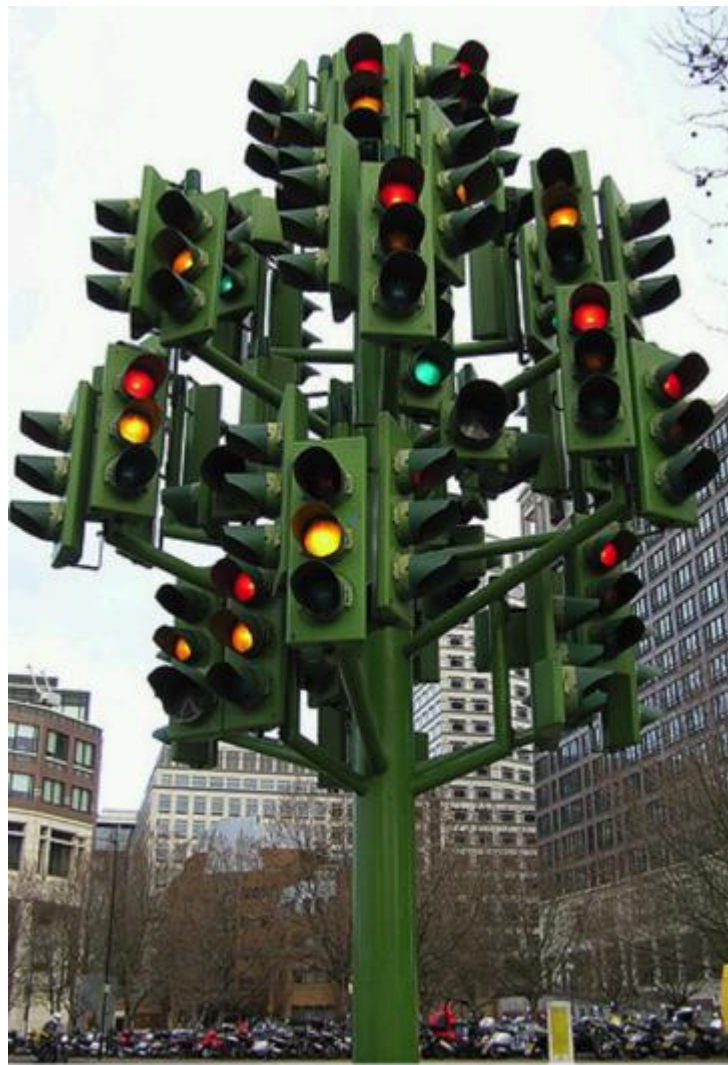
# Project and craftsmanship based



# Industrial product, quality, Sales channels and marketing







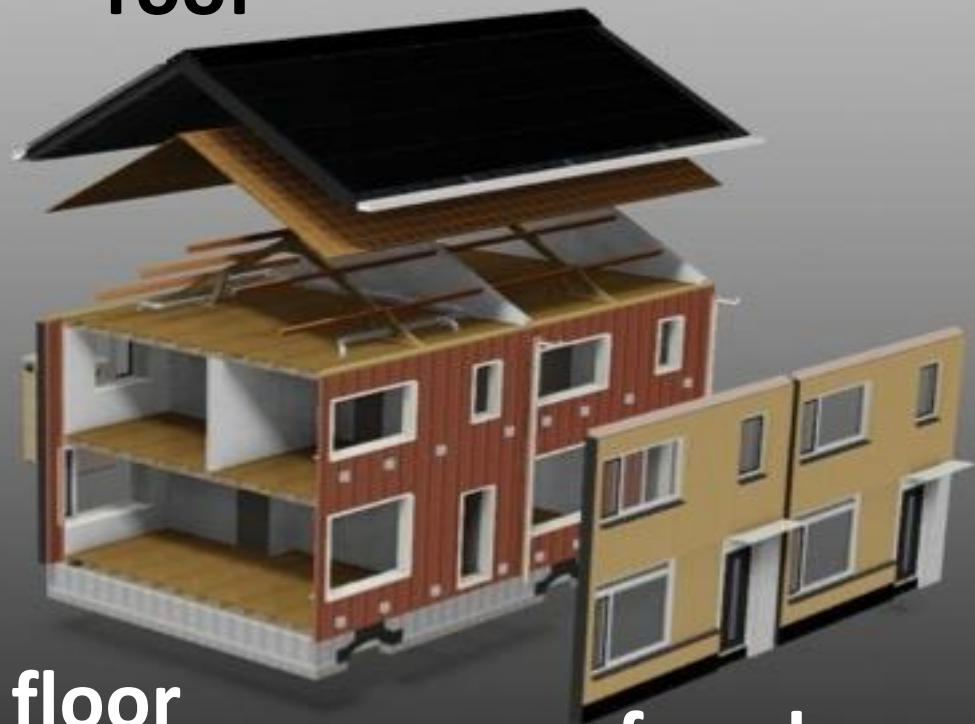








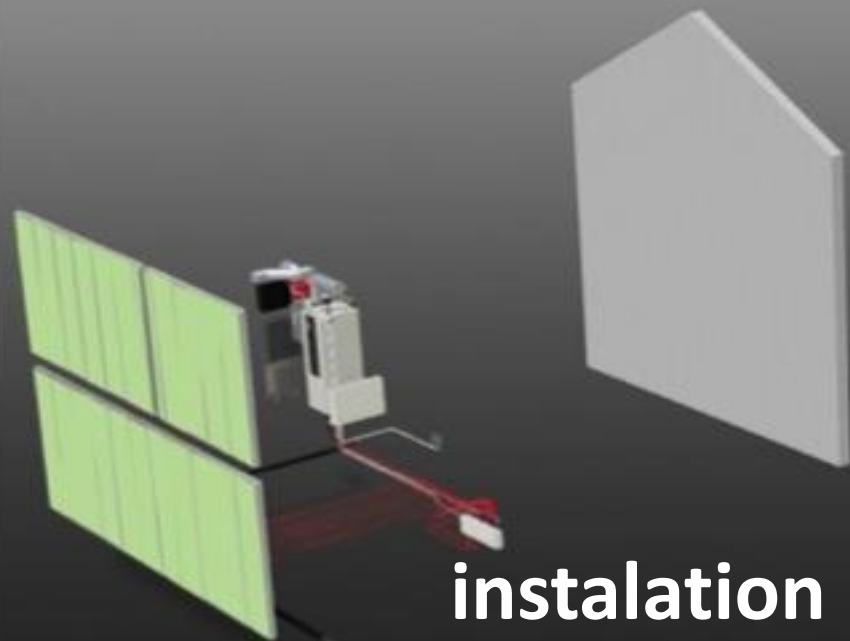
roof



floor

facade

instalation



# DEAL: 111.000 NET ZERO ENERGY REFURBISHMENTS



*housing  
associations*

*construction  
companies*





106













V1: 2 WEEKS 100k



V2: 1 WEEK 80k



V3: 1 DAY 65k

25k

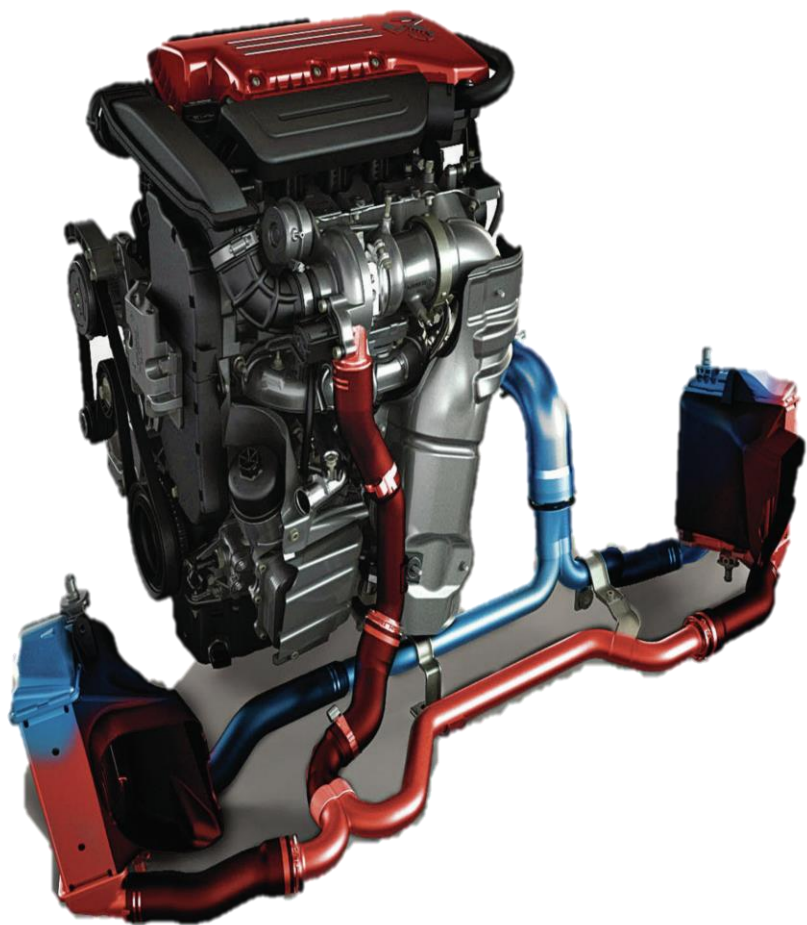
20<sup>th</sup> century solutions  
scale essential to transform

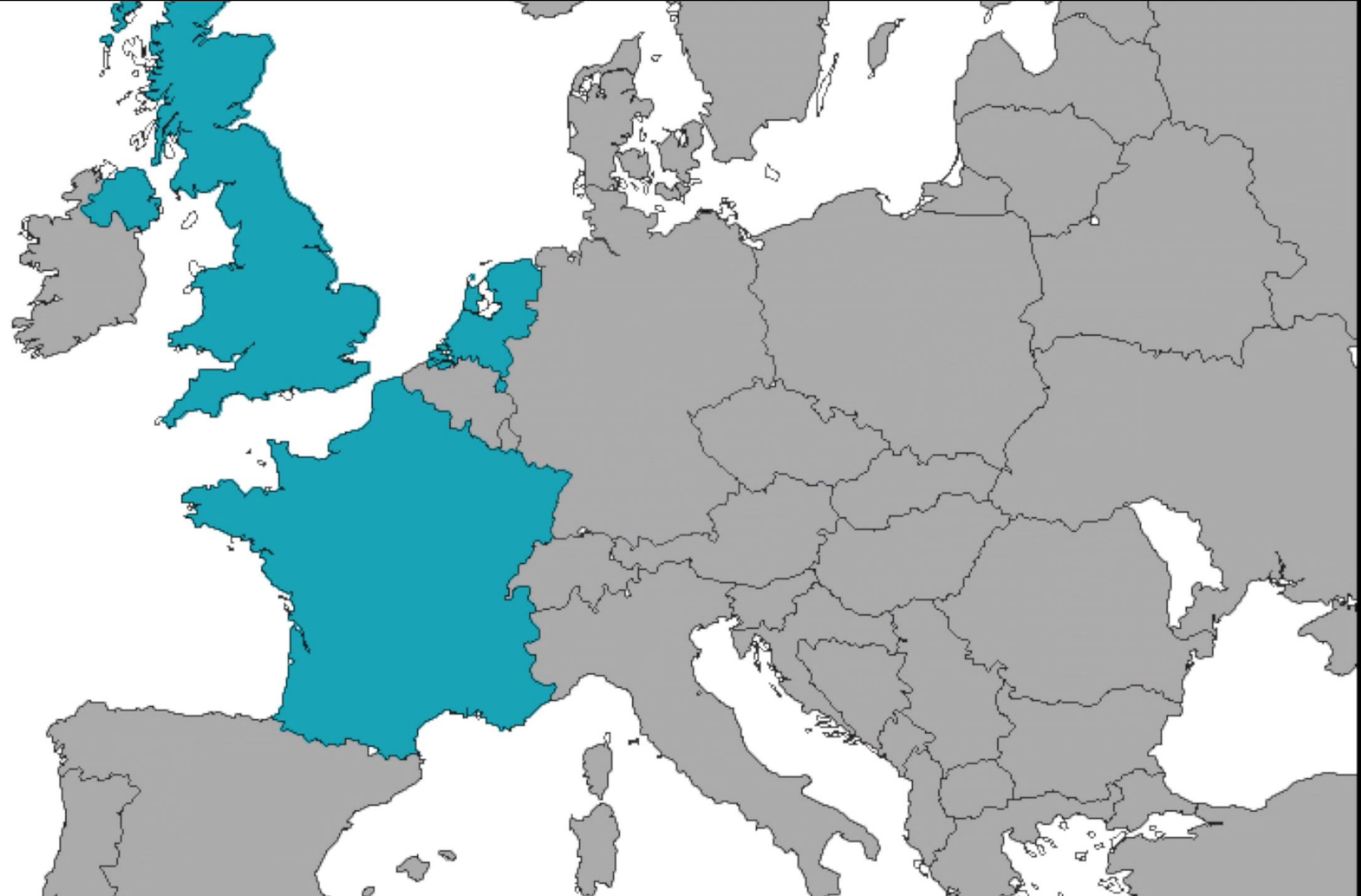














## DEEP RENOVATION PROJECT

Jasper van den Munckhof  
Manager EnergieSprong

[jasper.vandenmunckhof@Platform31.nl](mailto:jasper.vandenmunckhof@Platform31.nl)

**SET  
PLAN**  
Conference  
2015

**myenergy**  
Luxembourg



LE GOUVERNEMENT  
DU GRAND-DUCHÉ DE LUXEMBOURG  
Ministère de l'Économie



LE GOUVERNEMENT  
DU GRAND-DUCHÉ DE LUXEMBOURG  
Ministère du Développement durable  
et des Infrastructures

Département de l'environnement



LE GOUVERNEMENT  
DU GRAND-DUCHÉ DE LUXEMBOURG  
Ministère du Logement

With the  
support of



Co-funded by  
the European Union



Presidency of  
the Council of the  
European Union

GRAND DUCHY OF  
**Luxembourg**

This conference has received funding from the European Union Horizon 2020 research and innovation programme under the grant agreement No 681163